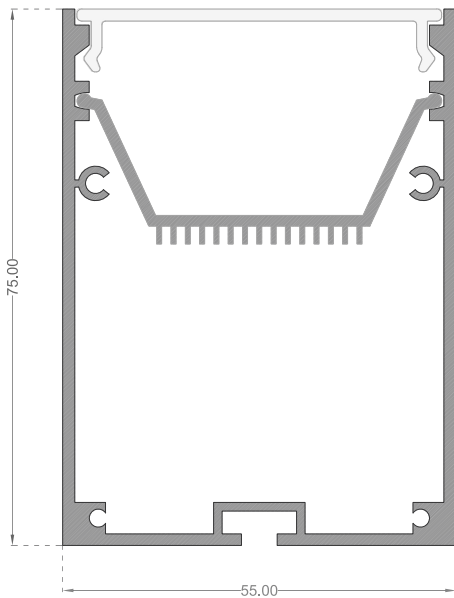


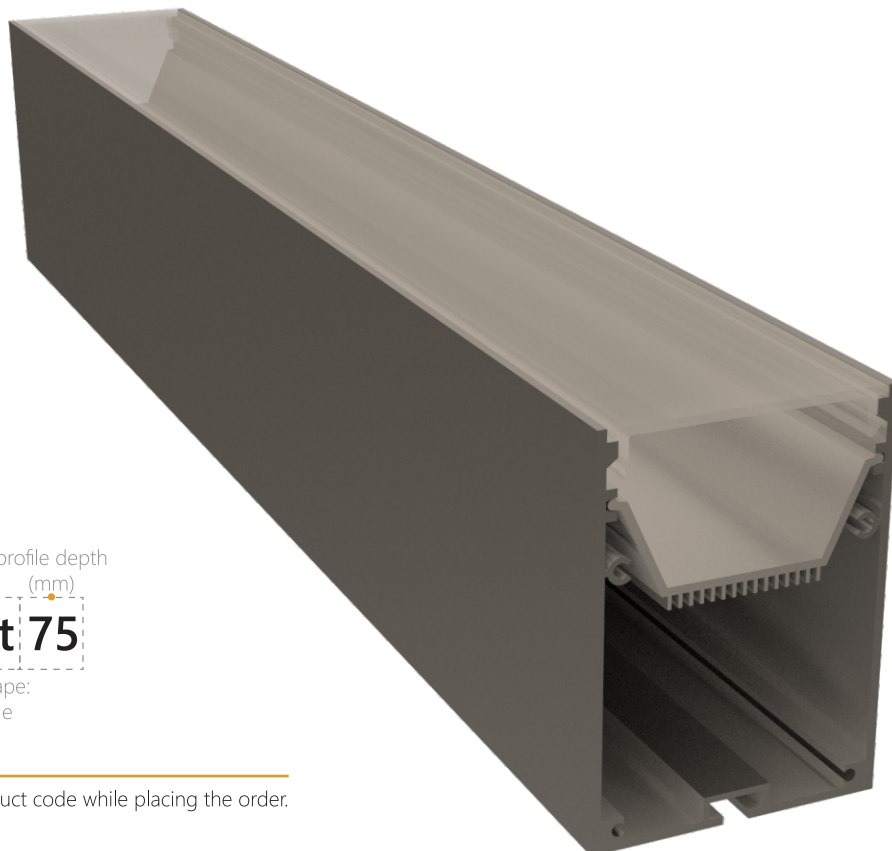
5575 Linear LED System



Features

- 55mm rectangular section, 75mm deep
- Mount Options: #Surface #Recess
- Diffuser Options: #Opal #Clear
- Available lengths: 1m, 2m
- Aluminium profile with snap-fit diffuser. Designed for mounting LED strip up to 30mm width.
- Profile comes with a mounting plate to adhere the strip onto.
- Channels on the sides of the profile allow you to clip the profile into metal clips.
- Aluminium end caps come in pairs. One having a hole for the wires to pass through.
- Totally customisable depending on your requirements. We design the system in accordance with your needs then build these luminaires to order.

Technical



maker profile width profile depth
 (mm) (mm)
axl . p 55 rect 75
 profile profile shape:
 rectangle

Note: Please quote the full product code while placing the order.