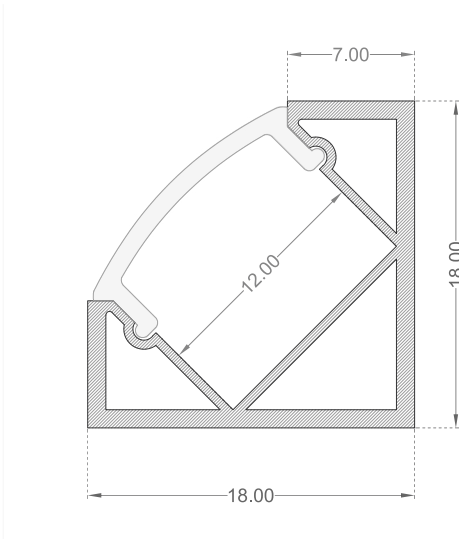


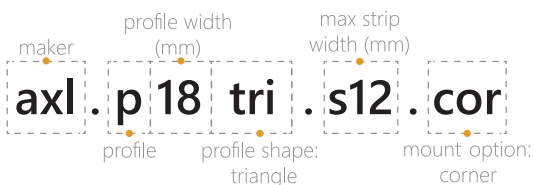
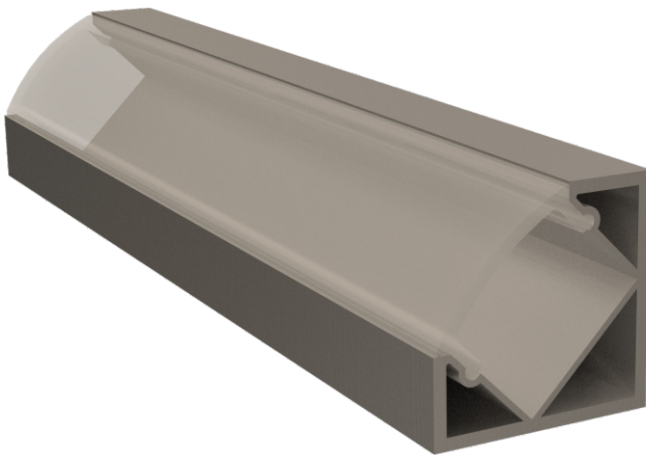
## Corner - 45° Mounting Profile



### Features

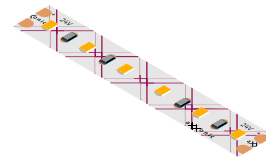
- 18mm corner profile, 18mm deep
- Mount Options: #Surface #Recess
- Diffuser Options: #Opal #Clear
- Available lengths: 1m, 2m
- Profile is designed to fit into corners and emit diffused light on a 45° angle.
- Aluminium profile with snap-fit diffuser. Designed for mounting LED strip up to 12mm width.
- Channels on the sides of the profile allow you to clip the profile into metal clips.
- Plastic end caps come in pairs. One having a hole for the wires to pass through.

### Technical

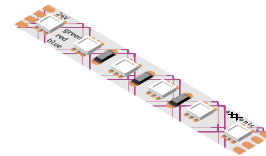


Note: Please quote the full product code while placing the order.

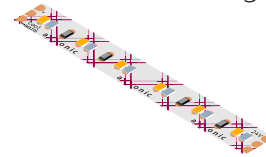
### Recommended LED



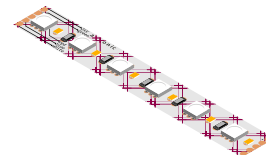
axl.fs8.120w-10W



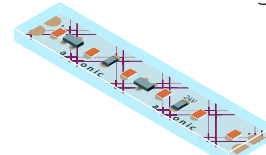
axl.fs8.120rgb-10W



axl.fs8.192ww-10W



axl.fs10.120rgbw-12W



axl.fs10.132wic-10W